


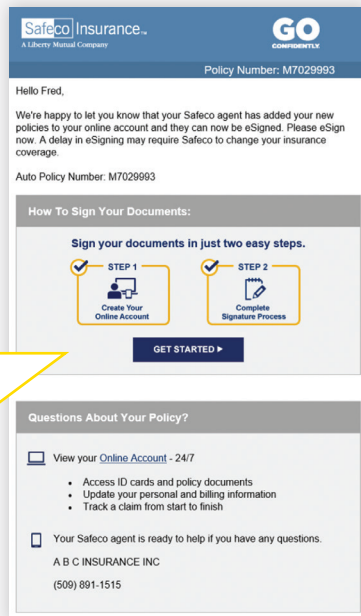
# How to sign your policy online with eSign.



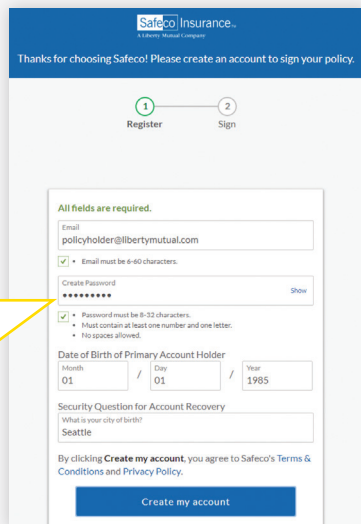
 To use eSign, you need a Safeco online account.

**Need an online account?**  
Here's how to get started.

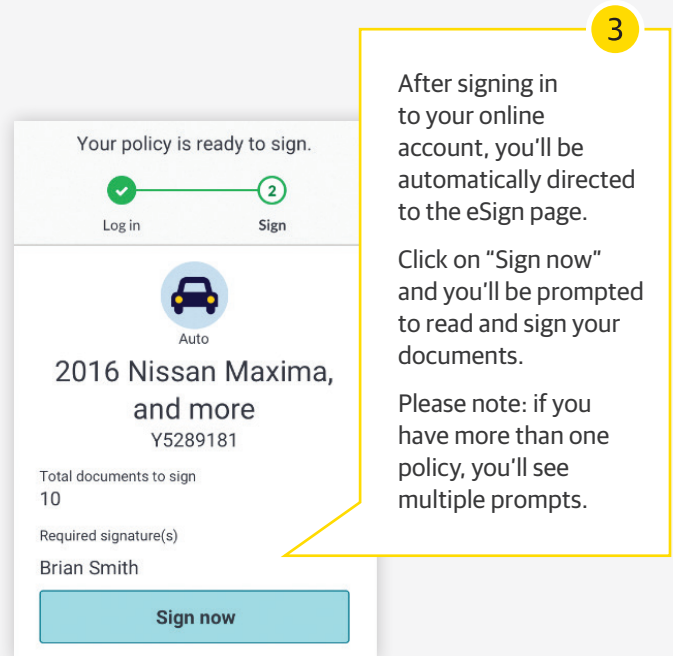
**Already have an online account?**  
Simply click "Get started" from the email you received from Safeco and move on to Step 3.



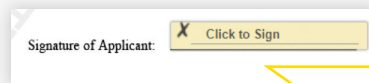
**1**  
Look for an email from Safeco® to complete the registration process started by your agent.



**2**  
You'll need to create a password and provide the primary account holder's date of birth and place of birth.



**3**  
After signing in to your online account, you'll be automatically directed to the eSign page.  
Click on "Sign now" and you'll be prompted to read and sign your documents.  
Please note: if you have more than one policy, you'll see multiple prompts.

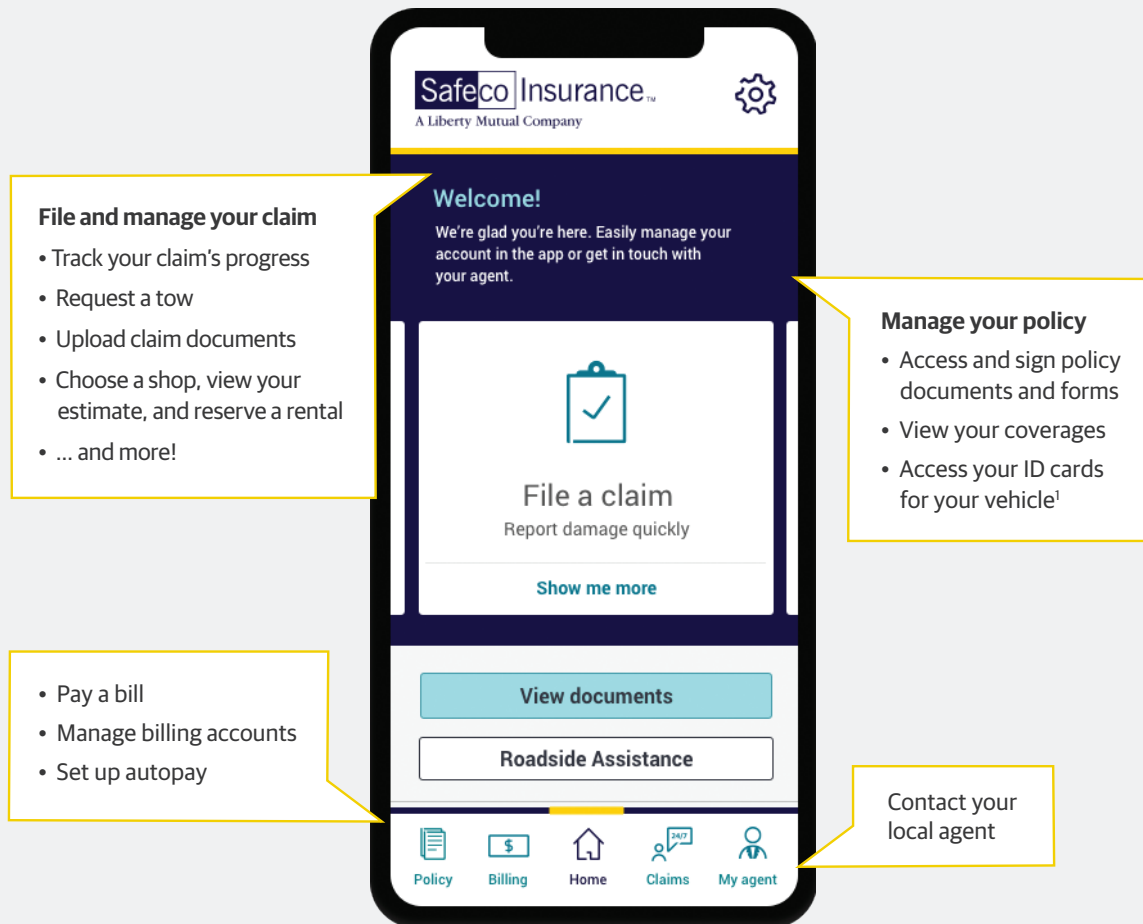


**4**  
Look for a signature box indicating where to sign.  
Once you're done, you'll get a confirmation message.

Now that you're registered, download the Safeco mobile app today to take advantage of all the benefits of your Safeco online account.

# Making the most of your Safeco online account.

We make it simple to get help, file a claim, and manage your policy 24/7 - online or with our easy to use mobile app.



## Fast and easy claims, that's our style.

When life throws you a curve ball, we'll help you bounce back in no time. Help is just a click away at [Safeco.com/claims](https://www.safeco.com/claims).



### Fast

File your claim in under 5 minutes.



### Easy

Our intuitive click-through menu guides you through all the steps.



### Convenient

We're here for you 24/7.

Download the Safeco mobile app today.



Smart tip: Everything you can do online can be done from the app too!